



# 光大环境

EVERBRIGHT ENVIRONMENT

Stock Code: 257

DUAL CARBONS **BLUEPRINT**  
for a **NEW GREEN CHAPTER**

NOVEMBER 2022

THE MOST

RELIABLE BRAND

IN THE

GREEN WORLD

**China Everbright Environment Group Limited** ("Everbright Environment", or the "Company"), is a flagship enterprise in the industrial sector of China Everbright Group Ltd., its controlling shareholder, and a company listed on the Main Board of The Stock Exchange of Hong Kong Limited ("HKEX") (257.HK).

Since its transformation into the environmental field in 2003, with nearly 20 years' development, the Company has become the largest environmental enterprise in China, a leading player in Asia's environmental protection industry, and a world-renowned environmental group. As the world's largest waste-to-energy ("WTE") investor and operator, Everbright Environment has a designed daily household waste processing capacity of more than 150,000 tonnes, with the service covering more than 120 million residents in China.

Everbright Environment's businesses cover WTE and integrated waste treatment, integrated biomass utilisation, hazardous and solid waste treatment, new energy, environmental remediation, water environment management, equipment manufacturing, waste sorting, environmental sanitation integration, resource recycling, development of zero-waste cities, energy-saving lighting, analysis and testing, research and development ("R&D") relating to green technologies, ecological and environmental planning and designing, as well as environmental protection industrial parks.

## DEVELOPMENT STRATEGIES

### Mission

Devoted to Ecology and Environment for a Beautiful China

### Pursuit

To create better investment value and undertake more social responsibility

### Focuses

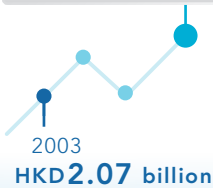
Solid Waste  
Water  
New Energy

Since the transformation into the environmental protection sector, the Company's major operating indicators have recorded continued and smooth growth

CAGR<sup>#</sup> of  
Total Assets

29%

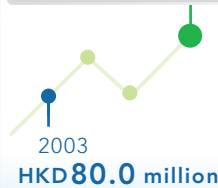
200.2 HKD  
billion  
2021



CAGR<sup>#</sup> of  
Revenue

43%

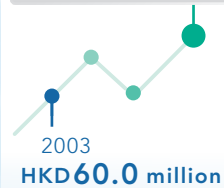
49.9 HKD  
billion  
2021



CAGR<sup>#</sup> of  
Profit Attributable to  
Shareholders of the  
Company

30%

6.8 HKD  
billion  
2021



<sup>#</sup> Compound annual growth rate from 2003 to 2021

## 2 CORE STRENGTHS

### TRIPLE POSITIONS

**A Chinese central state-owned enterprise** with a strong sense of mission and responsibility

**A listed company** with a high level of management and governance

**A foreign enterprise** with market-oriented efficiency and vitality

### BUSINESS SCALE<sup>#</sup>

#### Number of Invested Projects

**543**

#### Total Project Investment

over **RMB154** billion

#### Business Presence

**25 provinces, municipalities, autonomous regions and special administrative region in China**, as well as **Germany, Poland, Vietnam and Mauritius**

#### Designed Treatment/Supply Capacity



##### Household waste

over **150,000** tonnes/day



##### Waste water, reusable water and water supply

nearly **7.2** million m<sup>3</sup>/day



##### Hazardous and solid waste

over **2.9** million tonnes/year



##### Biomass raw materials

over **8** million tonnes/year



##### Steam supply

over **5.4** million tonnes/year

<sup>#</sup> As of 30 September 2022

## HONOURS

### Comprehensive Strength

- First place in the Top 50 Environmental Protection Enterprises in China (for three consecutive years)
- First place in the Top 10 Influential Solid Waste Treatment Enterprises in China (for 11 consecutive years)
- A Fortune China 500 Company (for two consecutive years)
- A MSCI China Index constituent (for 10 consecutive years)



**TOP IN BRAND VALUE RANKING** for China's listed environmental protection companies (with a RMB14.6 billion brand value)

### Technological Innovation

- Shortlisted in "2021 China Top 100 New Technology Companies"
- 2020 State Scientific and Technological Progress Award (second prize)
- Everbright Environmental Technical Equipment (Changzhou) Limited shortlisted in the list of the State Tech-advanced Little Giant Enterprises



Obtained **THE MOST WTE-LINKED PATENTS** across the globe



### Suitability

- A constituent of Dow Jones Sustainability Index Series (for seven consecutive years)
- A member of S&P Global's Sustainability Yearbooks (for multiple years)
- A constituent of Hang Seng Corporate Sustainability Benchmark Index (for 12 consecutive years)
- Achievement of Net-Zero Certificate
- A Pioneering Organisation in Net-Zero Contribution



FTSE4Good

Member of

**Dow Jones Sustainability Indices**

Powered by the S&P Global CSA

### Operations

#### Management

- More than 10 national AAA-rated household waste incineration plants
- Multiple WTE projects included in the first batch of demonstrative green Public-Private-Partnership (PPP) projects, by the National Development and Reform Commission ("NDRC") of the PRC
- Jiangsu Zhenjiang Sponge City Construction PPP Project shortlisted among the Top 5 in the 2021 Building Back Better Infrastructure Award of the United Nations Economic Commission for Europe ("UNECE")



#### Construction

- Luban Prize (the highest honour in China's construction sector) (awarded three times)

### Social Responsibility

- Jiangxi Ji'an WTE Project awarded the Social Practise Site by China Executive Leadership Academy, Jinggangshan
- A FTSE4Good Index constituent (for five consecutive years)
- Social Responsibility Brand of the Year (for eight consecutive years)
- Over 80 environmental education/science education bases



**ADVANCED GROUP ON ECOLOGICAL CIVILISATION IN CHINA**



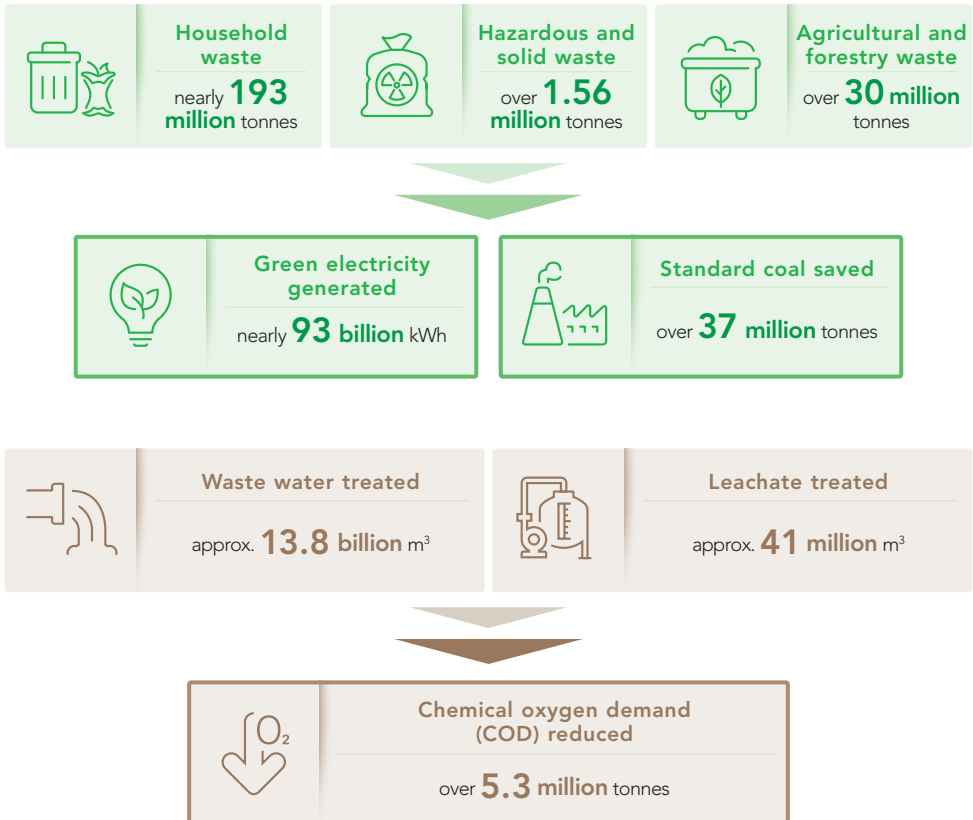
## 4 ESG HIGHLIGHTS

Everbright Environment continuously and voluntarily discloses its **environmental, social and governance (ESG)** performance and promotes the comprehensive application of ESG internally and throughout its value chain. Adhering to the philosophy of sustainable development, the Company continues to improve the transparency of ESG-linked disclosure and incorporate relevant practises into its operations.

## CONTRIBUTIONS TO THE ENVIRONMENT

The Company persists in offering high-quality environmental protection projects and services, to continuously improve the living and ecological environment.

### 1. Aggregate Environmental Contributions#



# The time period for the above data ranges from the date of the commencement of operation of the Company's first environmental protection project in 2005 to 30 June, 2022

## 2. Contributions to Carbon Neutrality

Since 2021, Everbright Environment has been following China's "Dual Carbons" strategic goals and made deployments relating to carbon reduction.

### 1) Greenhouse gas ("GHG") emissions reduction

2021

nearly **5 million** tonnes

2020

approx. **4 million** tonnes



Hong Kong Quality Assurance Agency confirms the Company's achievement of carbon neutrality

### 2) Carbon reduction pilot initiatives

Independent development and optimisation of its carbon calculation model to assess carbon emissions of the Company's operations and optimise the carbon reduction strategies.



Participation in a pilot programme launched by the Ministry of Ecology and Environment of the PRC (MEE) to monitor GHG emissions of the Company's projects, to facilitate the establishment and optimisation of GHG emissions monitoring methods for environmental protection projects in China.



Launch of pilot programmes on in-plant solar energy, low-carbon steam and others, to reduce the carbon footprint and operational costs of the projects and industrial parks where the projects are located.

### 3) Carbon reduction-related technology research

Launch of Carbon-Neutral Technology Research and Development Center and Advanced Technology Research Center

R&D of carbon capture-related technologies, completing the development of 100kg-level solid amine carbon dioxide (CO<sub>2</sub>) capture materials

Development of carbon assets at its projects and a carbon asset information management system



## 6 ESG HIGHLIGHTS

### SOCIAL RESPONSIBILITY

Everbright Environment practises its corporate citizenship and pursues shared interests across government authorities, businesses and residents, by leveraging on its projects, Everbright Environmental Protection Charitable Foundation (“EEPCF”), Everbright Environment Charitable Foundation, and other platforms.

#### Number of Projects Open for Public Visits

138

since 2017

Over **660,000** visitors received by the projects

since 2013

Over **2,000** sanitation workers sponsored by the EEPCF

since 2011

Over **7,000** students supported by Everbright Environment True Love School in Dangshan, Anhui Province

### Major Social Responsibility Activities in Recent Years



Joining and supporting activities in conjunction with environmental protection holidays including the World Environment Day



Launched environmental education workshops for primary and middle school students in Hong Kong



Supported the “Adventure in the Wood” by Hong Kong Committee for UNICEF



Donating money and goods to support the domestic COVID-19 pandemic control and prevention across its projects



Supporting the COVID-19 pandemic control and prevention abroad



## CORPORATE GOVERNANCE

Everbright Environment pursues high-level corporate governance standards, strengthens relevant practises, and improves transparency and accountability, to improve its corporate governance, and create value for its stakeholders.

- A clear division of responsibilities and rights among the Board of Directors ("Board"), committees under the Board and the management of the Company. The Board has added a female director and is capable of leveraging the diverse backgrounds of the Board members, such as their skills, industry knowledge and experience, education and other merits
- Diverse and smooth communication channels with shareholders of the Company ("Shareholders")
- Comprehensive, timely and highly transparent disclosure of information to ensure the Shareholders, investors and other stakeholders could access relevant information as appropriate
- Continuous improvements of the risk management system and the Environmental, Safety, Health and Social Responsibility (ESHS) management system
- Participation in and support of the Task Force on Climate-Related Financial Disclosures (TCFD) since 2020; and adherence to TCFD's standards for disclosure of key climate risks and strategies and corporate governance measures in response to relevant environmental risks in its sustainability reports
- Establishment of measures on internal and external whistleblowing and investigation, and policies against corruption, bribery and money laundry, to improve transparency, incorruptibility and accountability, as well as compliance with relevant laws and regulations across the Company



Everbright Environment was considered **one of the Top 10 Firms with the Highest Corporate Governance Index Scores** in 2020. The Company and its subsidiaries also received multiple awards at the Hong Kong Corporate Governance and ESG Excellence Awards and the Best Corporate Governance and ESG Awards.





## The world's largest WTE investor and operator

As a core business sector with the largest scale and highest business proportion at Everbright Environment, environmental energy's business covers WTE, food and kitchen waste treatment, leachate treatment, fly ash treatment, methane-to-energy, sludge treatment and disposal, construction and decoration waste treatment, and the development of environmental protection industrial parks.

### Business Strengths

#### WTE and synergistic business



**Xiongan New Area Waste Integrated Treatment Project:** the world's second and China's only underground waste integrated treatment project. The project is capable of processing various solid waste, including household waste, food and kitchen waste, faeces, sludge, and medical waste.

#### Overseas business



**Vietnam Can Tho WTE Project:** Everbright Environment's first overseas WTE project which was featured in a report series of China Central Television (CCTV). The project was also granted Vietnam's Urban Environment Quality Excellence Award in 2021.

#### Intelligent power plant with high parameter technique and excellent process



**Guangdong Boluo WTE Project:** One of China's first WTE projects to apply the high parameter technique, a benchmark project with refined operations management, and a demonstration project that has adopted a digitalisation model for intelligent power plants. The project is also considered Guangdong's first environmental and ecological park that integrates the project plant and local attractions.

## Data Highlights<sup>#</sup>



### Business presence

**19** provinces, municipalities and autonomous regions, and **2** overseas markets



### Total investment

over **RMB91 billion**



Number of projects\* **239**

### Number of WTE projects\*

**154**

### Designed waste processing capacity\*

nearly **140,000** tonnes/day

### Designed waste processing capacity in operation\*

over **125,000** tonnes/day

### Number of WTE synergistic projects

over **80**

### Number of environmental protection industrial parks

**12**

**14** WTE projects granted the certificate of the National AAA-rated Household Waste Incineration Plant

**3** projects' construction work granted the Luban Prize

**1** project considered China's first power plant with high parameter technique, large furnace, intermediate reheat technology, and intelligent functions

\* Operation and management ("O&M") project(s) included # As of 30 September, 2022

## A pioneer in "Open-up" of environmental protection projects



**Jiangsu Changzhou WTE Project:** An innovative case on opening up the project for public supervision by the Organisation Department of the CPC Central Committee in China; the only environmental protection project shortlisted in the first batch of the Primary Contact Points of the Key Projects of Central Commission for Guiding Cultural and Ethical Progress in China; and China's first "living room of the city", where the project has removed its plant boundary and is equipped with public amenities.

## A demonstration of solving the NIMBY effect



**Zhejiang Hangzhou WTE Project:** A good example of quelling the Not-in-my-Backyard (NIMBY) effect, and an active exploration of Everbright Environment on shared interests across government authorities, businesses and residents.

## High quality construction work



**Zhejiang Quzhou WTE Project:** The project, while carrying out high-quality construction, work downplayed factory features and integrated features of the local scenery, landforms and

residential houses during its design and construction, in a bid to better integrate with the local community. As a result, the project construction work received the Luban Prize in 2021.



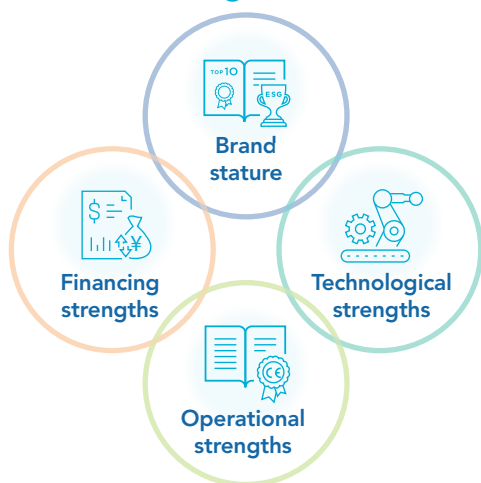
**Shandong Ji'nan WTE Project:** The project construction work received the Luban Prize in 2013, marking the Company's first project and the first project of its type in China to receive such recognition.

# ENVIRONMENTAL WATER

## China's leading water environment management service provider

China Everbright Water Limited ("Everbright Water") is listed on the Mainboard of The Singapore Exchange Securities Trading Limited and the Main Board of HKEX (U9E.SG & 1857.HK), with the goal of creating value to industries through various water-related businesses. Everbright Water has developed a fully-fledged business coverage, which includes raw water protection, water supply, municipal waste water treatment ("WWT"), industrial WWT, reusable water, river-basin ecological restoration, and sludge treatment and disposal. The company has also formed a full industry chain on the water business, including project investment, planning and design, technology R&D, engineering and construction, and operations management.

### Core Strengths



### Featured Projects



**Shandong Ji'nan WWT Project:** Since the first plant commenced operation in 2006, the project has expanded several water plants with a total designed daily WWT capacity of more than 1.2 million m<sup>3</sup>. The project was the only Chinese project shortlisted in the 12 successful PPP case studies worldwide in the 2016 UNECE PPP Forum.



## Data Highlights<sup>#</sup>



### Business presence

**12** provinces, municipalities and autonomous regions, and **1** overseas market



### Total investment

nearly **RMB29 billion**



### Number of projects secured<sup>\*</sup>

**160**

### Designed water treatment capacity<sup>\*</sup>

approx. **7.18 million m<sup>3</sup>/day**

### Designed water treatment capacity in operation<sup>\*</sup>

approx. **5.77 million m<sup>3</sup>/day**

### Designed municipal and industrial WWT capacity<sup>\*</sup>

approx. **6.05 million m<sup>3</sup>/day**

### Designed reusable water supply capacity

approx. **280,000 m<sup>3</sup>/day**

### Designed water supply and raw water supply capacity

**850,000 m<sup>3</sup>/day**

<sup>\*</sup> O&M project(s) included    <sup>#</sup> As of 30 September, 2022



**Jiangsu Zhenjiang Sponge City Construction PPP Project:** The project has prevented heavy rainstorm in Zhenjiang City through green infrastructure, making the city a more sustainable and better place to live. In 2021, the project was shortlisted in the UNECE's Top 5 in the Building Back Better Infrastructure Award. The project is also one of the 16 sponge city pilot projects that have received financial support from the PRC Central Government, one of the PPP demonstration projects of the Ministry of Finance of the PRC, and one of the second batch of PPP demonstration projects by the NDRC.



**"In-plant solar energy" pilot programme:** The first pilot programme was launched in Shandong Zibo WWT Project. Connecting to the power grid in August 2021, the relevant solar energy facility is able to satisfy approx. 9% of the project's total electricity consumption. This has helped the project to save energy and reduce costs, offering valuable experience to the Company for the development of green and low-carbon plants in the future.



## To become China's leading intelligent energy supplier dedicated to "Carbon Neutrality" and industrial hazardous waste treatment investor and operator

China Everbright Greentech Limited ("Everbright Greentech") is listed on the Main Board of HKEX (1257.HK) and focuses on the areas of hazardous and solid waste treatment, integrated biomass utilisation, new energy, and environmental remediation, amongst others.

### Core Strengths

#### Comprehensive environmental protection solutions

Extensive business coverage and operating experience to collaborate with local governments for the development of "zero wastes cities".

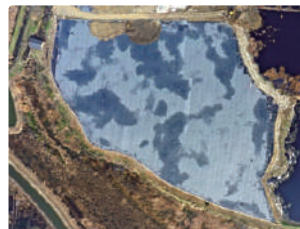
#### Comprehensive energy solutions

Adoption of a multi-energy synergy approach to collaborate with local governments for the development of "zero-carbon intelligent industrial parks" and "microgrids".

#### A unique integrated biomass and waste-to-energy model

An integrated approach to carry out a series of works, including site selection, design and construction, application of construction approval, and operations management, pioneering the ecological and environment management in rural county areas.

### Featured Projects



#### Jiangsu Suzhou Wujiang Municipal Household Waste Landfill Remediation Project:

Everbright Greentech's first project of its type. The project adopts aerobic accelerated stabilisation restoration technology, which saves energy, reduces emissions, and stabilises waste piles quickly. The project also treats landfill leachate via the full treatment technology, which is energy efficient and can eliminate concentrated liquid without secondary pollution.

## Data Highlights<sup>#</sup>



### Business presence

**15** provinces, autonomous region and special administrative region, and **1** overseas market



Total project investment  
over  
**RMB33 billion**



Number of projects  
and services secured  
**186**

### Number of hazardous waste treatment projects

**62**

### Designed hazardous waste processing capacity

approx. **2.94 million** tonnes/year

### Number of integrated biomass utilisation projects

**54**

### Designed biomass raw material processing capacity

nearly **8.09 million** tonnes/year

### Designed household waste processing capacity

over **11,000** tonnes/day

### Number of New energy projects

**24**

### Designed installed capacity

approx. **136 MW**

### Number of environmental remediation services

**45**

<sup>#</sup> As of 30 September, 2022



**Anhui Lingbi Integrated Biomass and WTE Projects:** China's first urban-rural integration project that was built en bloc. The project has a designed annual biomass raw material processing capacity of 300,000 tonnes and a designed daily household waste processing capacity of 400 tonnes.



**Jiangsu Xinyi Hazardous Waste Integrated Treatment Project:** The project has an aggregate designed annual hazardous waste treatment capacity of 70,000 tonnes (including an incineration capacity of 40,000 tonnes, a landfill capacity of 20,000 tonnes, and a physicochemical treatment capacity of 10,000 tonnes), in addition to an animal carcass treatment capacity of 3,000 tonnes.



**Hong Kong Solar Energy Project:** The Company's first environmental protection project in Hong Kong, which includes 11 solar energy sub-projects with a total installed capacity of 3.18 MW.





# EQUIPMENT MANUFACTURING

## China's backbone environmental protection equipment R&D and manufacturing provider

With Everbright Environmental Technical Equipment (Changzhou) Limited ("Chagnzhou Equipment Company") as the mainplatform, equipment manufacturing strives to upgrade its factories from the state green factories to zero-carbon factories. By integrating advanced manufacturing and modern services, the sector is fostering a new development paradigm to solidify its industry-leadig position.

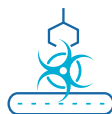
### ■ Important Certification

Changzhou Equipment Company was shortlisted in the list of the State Tech-advanced Little Giant Enterprises.



The self-developed multi-step hydraulic mechanical waste grate furnace series is considered a national key new product series.

The multistage hydraulic mechanical household waste grate furnace has been permitted to be sold in European Union (UN) markets using the CE mark granted by the EU.



The medical waste/hazardous waste countercurrent rotary kiln was included in China's first key promotion and application technology catalog.

The food and kitchen waste processing equipment is recognised as the first set of equipment of this type across Suzhou, Wuxi and Changzhou cities, Jiangsu Province.



## Featured Products

### Environmental protection equipment



**Grate furnace series:** The self-developed grate furnace series has daily waste processing capacities ranging from 300 tonnes/day to 1,000 tonnes/day, some of which received the second prize of the MEE's Technological Advancement Awards and filled the void of the domestic market.



**Flue gas purification system:** The system, which is self-developed, ensures gas emissions from the projects fully comply with relevant national standards, and the daily average level of online monitored gas emissions is superior to the EU 2010/75/EU Standard.



**DTRO membrane treatment equipment:** The self-developed DTRO membrane treatment equipment guarantees the removal rate of chemical oxygen demand (COD<sub>Cr</sub>), ammonia nitrogen and salt exceed 98%, with a recovery rate exceeding 50%, for high salinity influent water. The equipment has significant advantages of avoiding material clogging, long service life, minimum scaling and pollution, easy maintenance, low membrane replacement cost and high concentration rate.



**Leachate treatment system:** Through year's of efforts in self-development and application, the system complies with relevant discharge standards and ensures the reuse of leachate after treatment.



**Food and kitchen waste processing equipment:** The equipment can be co-located with other WTE facilities. The solid residue, methane and odour from the food and kitchen waste processing equipment and the WTE facilities can be treated together, which could avoid duplicate investment, cut waste incineration cost, enhance economic returns, and maximise the overall profitability of the projects. The equipment has various advantages, including a closed system, automatic control, and unmanned sorting.

### Consumer products



Equipment manufacturing's **CE<sup>2</sup>P water purifier products** are dedicated to providing the public with healthy, safe drinking water. With the filter membrane as the core technology, the products can filter out the maximum amount of harmful substances from tap water, and they have been certified by professional organisations.



Please scan the QR code to access  
The CE<sup>2</sup>P water purifier product details  
(Chinese version)



## TECHNOLOGICAL INNOVATION

### The technology R&D and innovation engine of Everbright Environment

With the R&D layout across Hong Kong, Shenzhen, Nanjing and Qingdao, the technological innovation sector strives to become a global platform dedicated to green technological innovation and conversion.

In terms of R&D layout, the sector carries out R&D work with a focus on the development of traditional business, new business and the Company's future development, in a bid to empower and provide technical support for the development of all businesses of Everbright Environment.



The Carbon-Neutral Research and Development Center was established to actively carry out relevant theoretical and technical researches relating to China's "Dual-Carbons" strategic goals.

### Key Research Areas



## Intellectual Property Rights<sup>#</sup>



Total number of patents  
**1,577**



Invention patents  
**166**



Utility patents  
**1,171**



Software copyright licences  
and appearance patents  
**240**

**Obtaining the most  
WTE-linked patents across the globe**

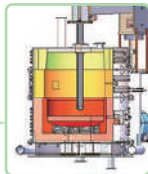
<sup>#</sup> As of 30 September 2022

## Recent Major R&D Achievements

Large-scale integrated solid waste incineration technology has been converted for application purposes



The self-developed plasma melting technology for fly ash treatment has been recognised to have reached the world-leading level



Everbright-Qingdao University of Technology Research Institute of Environmental Technology received certificate from China National Accreditation Service for Conformity Assessment (CNAS), being considered one of the nationally recognised laboratories



Waste leachate distillation nitrogen removal and ammonia nitrogen resource reduction technology has passed the technology achievement appraisal and reached the international advanced level

The self-control intelligent system and technology for waste incineration

Application of integrated desulfurisation and denitrification technology



R&D and application of the wet deacidification technology for waste incineration



# ECO-RECYCLING

## To become a leading investor and operator of integrated urban services, waste sorting and resource recycling

Riding on the “Five Points in One Line” process model for waste sorting, eco-recycling is striving to build a full-chain business system from waste sorting and recycling from the source to end disposal.

### ■ Main Businesses

#### Integrated urban services

Sanitation services, landscaping, municipal maintenance

#### Waste sorting

Waste sorting, construction of waste collection and transportation systems, sale of intelligent waste sorting bins

#### Resource Utilisation, Reuse and Recycle

Resource utilisation of construction waste, food waste and other types of waste, and collection, sorting and utilisation of renewable resources.

### ■ Featured Projects

### ■ Core Strength

The “Five Points in One Line” process model for waste sorting covers five major steps for waste treatment, including sorting, transferring, selecting, recycling and end-disposal of waste.



Please scan the QR code to watch the video on the “Five Points in One Line” process model (Chinese version)



Yunan Yuxi Household Waste Collection, Transferring and Transportation System Construction PPP Project



Shandong Ji'nan Kitchen Waste Resource Utilisation Project



Jiangsu Suzhou Wujiang Qidu Town Waste Sorting and Operation Services



Jiangsu Yancheng Tinghu Waste Sorting and Selecting Project

# GREENERGY

## A leading integrated service provider specialised in energy-saving lighting and smart city development in China



With the development philosophy of "Greenness, Health and Intelligence", greenergy's business covers the R&D, design, manufacturing and sales of energy-saving healthy lighting products, as well as software and hardware for smart city development based on greenergy's intelligent light poles. The sector provides systematic solutions to lighting services for urban streets, tourism sites and education purposes, as well as for the development of intelligent industrial parks and smart cities. Greenergy is dedicated to providing one-stop customised services for government, enterprise and individual clients based on the energy management contract (EMC), engineering, procurement and construction (EPC) and direct sales models.

### Products with Independent Intellectual Property Rights

#### Green lighting

Leveraging major products include the **Everbright New Sodium Lamps** (the "Lamps") and LED energy-saving products, supplemented by solar energy products, greenergy provides streetlight retrofitting, energy custody, and customised services, according to the positioning and characteristics of the target cities.

The Lamps are up to 50% lower in energy consumption as compared with high-pressure sodium lamps currently used for street lighting in China, with a number of advantages, such as wide range of applications, excellent light efficiency, good light quality, low maintenance cost, strong fog permeability, healthy lighting, convenient replacement, and low maintenance cost.



#### Healthy lighting

Greenergy's major products include classroom lights and desk lamps, which are equipped with top quality healthy light source technology to create a healthy lighting environment.



#### Intelligent lighting

Greenergy's intelligent light poles are positioned to be the carriers, together with the intelligent park software as the platform, to facilitate the development of smart cities.

Please scan the QR code to access  
Greenergy's product catalogue  
(Chinese version)



# ENVIRONMENTAL PLANNING

## To become a first-class planning and design institute

Leveraging Everbright Ecological and Environmental Planning and Design Institute (the "Institute") as the main platform, environmental planning focuses on the areas of environmental protection and energy, actively builds up core technological capabilities, and diversifies its business. By doing so, the sector aims to enhance its technical capabilities, expand the business scope, and extend its industry chain, striving to gradually develop an integrated engineering consultancy service system.

### Specialised areas

New energy power generation, integrated water environment management, municipal heat engineering, amongst others.

### Scope of services

Technical consultation, engineering design, EPC, amongst others.

### Value-added businesses

3-D design, digital delivery, digital factory, engineering data center, amongst others.

## Main Qualifications

**Design and EPC qualifications:** Electric Power Engineering Class B, Professional for Municipal Industry Grade B (heat engineering), Construction Professional Grade B for Construction Industry, Environmental Engineering Class A (for solid waste treatment and disposal projects), Environmental Engineering Design Class B (water pollution control)

**Consulting qualifications:** Ecological Construction and Environmental Engineering Grade A, Electricity Class B and Municipal Public Class B

**Construction general contracting qualifications:** Third-grade General Contractor for Municipal Public Works, First-grade Professional Contracting Qualification for Environmental Protection Projects

**National pressure pipeline design qualification**



Engineering Design  
Qualification Certificate





[www.cebenvironment.com](http://www.cebenvironment.com)



[www.ebwater.com](http://www.ebwater.com)



[www.ebgreentech.com](http://www.ebgreentech.com)



Everbright Environment  
WeChat Account



Everbright Water  
WeChat Account



Everbright Greentech  
WeChat Account



Everbright Equipment  
Manufacturing  
WeChat Account



# 中国光大环境(集团)有限公司

CHINA EVERBRIGHT ENVIRONMENT GROUP LIMITED

CHINA EVERBRIGHT ENVIRONMENT GROUP LIMITED

中国光大环境(集团)有限公司

[www.cebenvironment.com](http://www.cebenvironment.com)

